

Memorandum

To: Riley-Purgatory-Bluff Creek Watershed District
From: Jessica Olson, PE and Scott Sobiech, PE, Barr Engineering Co.
Subject: Upper Riley Creek Ecological Enhancement Project
Date: December 9, 2024
Project: 23/27-0053.14 029B
c: Terry Jeffery – RPBCWD Administrator

Requested Board Action

It is requested that the RPBCWD Board of Managers authorize Barr Engineering Co. to solicit bids from contractors to construct the Upper Riley Creek Ecological Enhancement Project as designed and shown on the construction documents. It is recommended that bid solicitation occur after the RPBCWD Administrator, in consultation with RPBCWD legal counsel and engineer, determines adequate property rights are obtained and the cooperative agreement with the city of Chanhassen is executed.

The portion of Riley Creek between Highway 5 and Lake Susan (aka upper Riley Creek) for the RPBCWD was identified for restoration in the Creek Restoration Action Strategy (CRAS) and the capital improvement program portion of RPBCWD's 10-year Watershed Management Plan. In May 2021, Barr Engineering completed an ecological enhancement plan for Upper Riley Creek. The plan identified stream ecology enhancement options for a proposed effort to improve the upper reaches of Riley Creek, identifying approximately 8,600 feet of the creek and associated uplands that could be restored and stabilized to improve ecological function, provide diverse habitat layers, reduce streambank erosion, improve soil health and enhance public access and understanding of the creek.

At the January 2022 board meeting, the RPBCWD Board of Managers authorized final design, permitting, and agreement support services for the Upper Riley Creek Ecological Enhancement Project, based on the recommendations included in the enhancement plan. As the coordination with the city of Chanhassen (City) progressed during design, the project team identified an opportunity to enhance the riparian areas adjacent to the creek that is presently bare soil and used by the city of Chanhassen for storage of materials, debris, and other miscellaneous items. (aka boneyard area). In addition, the city identified a need for facility to enhance the treatment and management of materials generated by regular street sweeping, removal of sediment from catch basins and storm sewers, and the removal of sediment deltas at storm drain outfalls. The RPBCWD and city collaborated on the development of plans for a decant facility that will dry materials extracted from city stormwater-management practices and other facilities, which support Chanhassen's compliance with state stormwater-management requirements and will reduce migration of pollutants to Riley Creek and downstream waterbodies. The proposed decant facility is located on two city-owned parcels. One of the parcels contains the Public Works building, and the other parcel includes a portion of upper Riley Creek, an existing wetland, and a boneyard area used by Public Works staff for material storage and stockpiling. At the December 2022 board meeting, the Board of Managers authorized incorporating the final design, permitting and agreement support services for a decant facility. The city of Chanhassen is the primary landowner and a financial partner on this project. The City would be responsible for 100% of the construction cost of the decant facility.

Because the project is on property owned by multiple landowners, including private owners, Economic Development Authority (EDA), and the City, RPBCWD’s Administrator has had numerous discussions and close coordination with the property owners to secure the necessary agreements to allow access, construction, and maintenance of the project. The following table summarize the status of the various property agreements.

Table 1. Property Agreement Status

Parcel ID	Property Owner	Status
25 193 0080 25 191 0040 25 191 0030 25 190 0360 25 190 0340 25 190 0320 25 190 0030 25 406 0870	City of Chanhassen	Pending City Council Action at the December 9, 2024 meeting
25 193 0051	EDA Parcel	Pending City Council Action at December 9, 2024 meeting
NA	MN DOT ROW	Permitting process underway
25 751 0020	Private	Administrator coordinating final agreement execution
25 751 0030	Private	Agreement Secured
25 190 0330	Private	Administrator coordinating final agreement execution
25 190 0200	Private	Administrator coordinating final agreement execution
25 566 0010	Private	Administrator coordinating final agreement execution
25 566 0070	Private	Administrator coordinating final agreement execution

Construction documents have been prepared for the project, and include bidding documents, construction drawings, and technical specifications. The design of the proposed ecological restoration includes, but is not limited to, in-channel debris removal (i.e. trash, trees obstructing flow, etc.), rock riffles, log and boulder vanes, beaver dam analogs, root wads, minor channel re-meandering and bank grading along approximately 8,600 feet of Riley Creek and a tributary ravine, dredging of a connected pond, installation of a concrete slab, metal awning, and associated earthwork/surfacing. The construction drawings also include erosion control, site restoration with native plantings, and establishment of a buffer for the creek.

Construction will include grading the channel and immediate banks. Because the construction area will be concentrated in the existing channel, timing the construction during anticipated low flows will minimize the need to control water and reduce the risk of erosion during construction. The best window for completing this work is during anticipated lower-precipitation months in fall and early winter. In late fall and early winter precipitation may also be more snow than rain and frost is minimal, which allows grading to be completed without significant adverse impacts.

RPBCWD and Barr have been working with the city of Chanhassen and agencies to complete necessary permitting and agreements. Both Mn DNR and US Army Corps of Engineers permits have been received for the project. City staff have reviewed the plans and a cooperative agreement is under consideration by City Council. The following table summarizes necessary permits and the approval status:

Table 2. Permitting Status

Permitting Agency	Status
City of Chanhassen	Pending
MN DNR	Approved
US Army Corps of Engineers	Approved
Metropolitan Council Encroachment Agreement	Pending
RPBCWD	Pending

The Engineer’s opinion of probable construction cost for the project based on the 100% designed s is summarized in Table 3. The overall opinion of probable construction costs for the 100% design configuration are higher than the feasibility study opinion of cost, but within the estimated accuracy range.

Table 3. Engineer’s Opinion of Probable Construction Cost

Item	100% Design Configuration (November 2024) ¹			Total ^{1,2,3,4}
	RPBCWD Share of Base Design ²	City Share of Base Design ²	Additional City Items (Decant Facility) ³	
OPINION OF PROBABLE CONSTRUCTION COST	\$2,549,140	\$142,560	\$758,000	\$3,449,700
Estimated Accuracy Range	\$2,421,683	\$135,432	\$645,000	\$3,202,100
(-5% and +10%)	\$2,804,054	\$156,816	\$986,000	\$3,946,900

¹Estimate exclude cost of long-term coordination with city of Chanhassen for ongoing monitoring and maintenance

²Estimated accuracy range for 100% design configuration was -5% and +10% of the estimated total project cost. RPBCWD share of project is approximately 95%, city’s share of project is approximately 5%.

³Estimated accuracy range for Decant Facility was -15% and +30%

⁴100% design configuration opinion of probable cost includes approximately \$900,560 of estimated costs to be borne by the city of Chanhassen for a decant facility (alternate bid item), removal of sediment from stormwater pond, replacement of an existing pond outlet structure with an enhanced structure, and 50% split for the replacement of concrete pipe and flared end sections.

The opinion of probable cost provided is made based on Barr Engineering’s experience and qualifications and represents our best judgment as experienced and qualified professionals familiar with the project. Because we have no control over the cost of labor, materials, equipment or services furnished by others, or over the contractor’s methods of determining prices, or over competitive bidding or market conditions, Barr Engineering cannot and does not guarantee that proposals, bids, or actual costs will not vary from the opinion of probable cost presented.

It is requested that the RPBCWD Board of Managers authorize Barr Engineering Co. to solicit bids from contractors to construct the Upper Riley Creek Ecological Enhancement Project as designed and shown on the construction documents. If the Board of Managers authorizes solicitation of bids to construct the stabilization measures, the following tasks would be completed. It is also recommended that bid solicitation occur after adequate property rights are obtained and the cooperative agreement with the city of Chanhassen is executed; therefore, the tentative schedule below is subject to revision.

- December 11, 2024 – Board of Managers authorizes Barr Engineering Co. to solicit bids
- December 5, 2024 through January 15, 205 – Finalize necessary property agreements

To: Riley-Purgatory-Bluff Creek Watershed District
From: Jessica Olson, PE and Scott Sobiech, PE, Barr Engineering Co.
Subject: Upper Riley Creek Ecological Enhancement Project
Date: December 9, 2024
Page: 4

- January 15, 2024 – Advertise for bids
- January 29, 2025 – Mandatory pre-bid meeting
- February 19, 2025 – Open bids
- April 2, 2025 – Board approval of bid
- April 16, 2025 (or after) – Construction begins

Attachments

- Selected sheets from the drawings for the Upper Riley Creek Ecological Enhancement Project



Contract Documents

Upper Riley Creek Ecological Enhancement Project Chanhassen, Minnesota

Prepared for
Riley Purgatory Bluff Creek Watershed District

November, 2024

TECHNICAL SPECIFICATIONS

UPPER RILEY CREEK ECOLOGICAL ENHANCEMENT PROJECT RILEY PURGATORY BLUFF CREEK WATERSHED DISTRICT CHANHASSEN, MINNESOTA

These specifications were prepared by Barr Engineering Co.



Barr Engineering Co.
4300 MarketPointe Drive
Suite 200
Minneapolis, MN 55435

CERTIFICATIONS

I hereby certify that these specifications were prepared by me or under my direct supervision and that I am a duly Licensed Professional Engineer under the laws of the State of Minnesota.

A handwritten signature in black ink that reads "Jessica Olson".

Responsible for Division 00, Division 01, Division 31 (except Section 31 23 19), Section 33 40 00, and Division 35 of the Specifications.

Jessica Olson, P. E.
License Number: 43102
Date: November 19, 2024

A handwritten signature in black ink that reads "Bryan Pitterle".

Responsible for Section 31 23 19, Section 32 16 00, and Division 33 (except Section 33 40 00) of the Specifications.

Bryan Pitterle, P.E.
License Number: 55568
Date: November 19, 2024

A handwritten signature in black ink that reads "Neil Offelie".

Responsible for Division 26 of the Specifications.

Neil Offelie, P.E.
License Number: 61655
Date: November 19, 2024



I hereby certify that these specifications were prepared by me or under my direct supervision and that I am a duly Licensed Landscape Architect under the laws of the State of Minnesota.



Responsible for Division 32 (except Section 32 16 00) of the Specifications.

Brendan Dougherty, L.A.

License Number: 54710

Date: November 19, 2024



CONTRACT DOCUMENTS

UPPER RILEY CREEK ECOLOGICAL ENHANCEMENT PROJECT RILEY PURGATORY BLUFF CREEK WATERSHED DISTRICT CHANHASSEN, MINNESOTA

TABLE OF CONTENTS

	<u>Page</u>
Certifications	00 01 05-1
Table of Contents	00 01 10-1
Advertisement for Bids	00 11 13-1
Instructions to Bidders	00 21 13-1
Bid Form	00 41 00A-1
List of Proposed Subcontractors	00 41 00B-1
List of Proposed Suppliers	00 41 00C-1
Noncollusion Affidavit	00 41 00D-1
Bid Bond	00 41 00E-1
Affidavit of Responsible Contractor Compliance	00 41 00F-1
Sworn Statement of Responsible Bidder	00 45 13-1
Notice of Award	00 51 00-1
Form of Agreement	00 52 00-1
Notice to Proceed	00 55 00-1
Construction Performance Bond Forms	00 61 13A-1
Construction Payment Bond Forms	00 61 13B-1
General Conditions	00 72 00-1
Supplementary Conditions	00 73 00-1

Technical Specifications

Division 01 – General Requirements

01 11 00	Summary of Work	01 11 00-1
01 14 00	Work Restrictions	01 14 00-1
01 22 00	Unit Price Measurement and Payment	01 22 00-1
01 29 00	Payment Procedures	01 29 00-1
01 31 19	Project Meetings	01 31 19-1
01 33 00	Submittal Procedures	01 33 00-1
01 35 23	Safety	01 35 23-1
01 50 00	Temporary Facilities and Controls	01 50 00-1
01 55 00	Access Roads and Parking	01 55 00-1
01 55 26	Traffic Control	01 55 26-1
01 57 10	Control of Water	01 57 10-1
01 77 00	Closeout Procedures	01 77 00-1

Division 26 – Electrical

26 00 00	Electrical General Provisions	26 00 00-1
26 05 00	Common Work Results for Electrical	26 05 00-1
26 50 00	Lighting	26 50 00-1



Division 31 – Earthwork

31 00 00	Earthwork	31 00 00-1
31 11 00	Clearing, Grubbing, and Site Preparation	31 11 00-1
31 23 19	Dewatering	31 23 19-1
31 25 00	Erosion and Sedimentation Control	31 25 00-1

Division 32 – Exterior Improvements

32 16 00	Roadway and Sidewalk Pavements	32 16 00-1
32 93 10	Site Restoration and Herbaceous Plant Installation	32 93 10-1
32 93 43	Trees and Shrub Installation	32 93 43-1
32 97 00	Vegetation Establishment	32 97 00-1

Division 33 – Utilities

33 05 28	Trenching and Backfilling for Utilities	33 05 28-1
33 10 00	Water Utilities	33 10 00-1
33 30 00	Sanitary Sewer Utilities	33 30 00-1
33 40 00	Storm Drainage Utilities	33 40 00-1

Division 35 – Waterway and Marine Construction

35 42 34	Soil Reinforcement Bank Protection	35 42 34-1
35 42 37	Riprap Bank Protection	35 42 37-1

Drawings

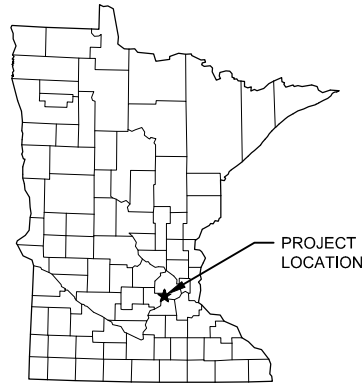


Drawings

UPPER RILEY CREEK CORRIDOR ENHANCEMENT AND DECANT FACILITY

RILEY PURGATORY BLUFF CREEK WATERSHED DISTRICT

CHANHASSEN, MN



PROJECT LOCATION

LOCATION MAP
NOT TO SCALE

CONTACTS:

ENGINEER CONTACT:

Jessica Olson
Barr Engineering Co.
325 South Lake Avenue
Duluth, MN 55802
218-259-7118
jolson@barr.com

OWNER'S REPRESENTATIVE CONTACT:

Terry Jeffery
Interim District Administrator
Riley Purgatory Watershed District
18681 Lake Drive East
Chanhasseen, MN 55317
952-807-8885
tjeffery@rpbcd.org

PROPERTY OWNER'S REPRESENTATIVE:

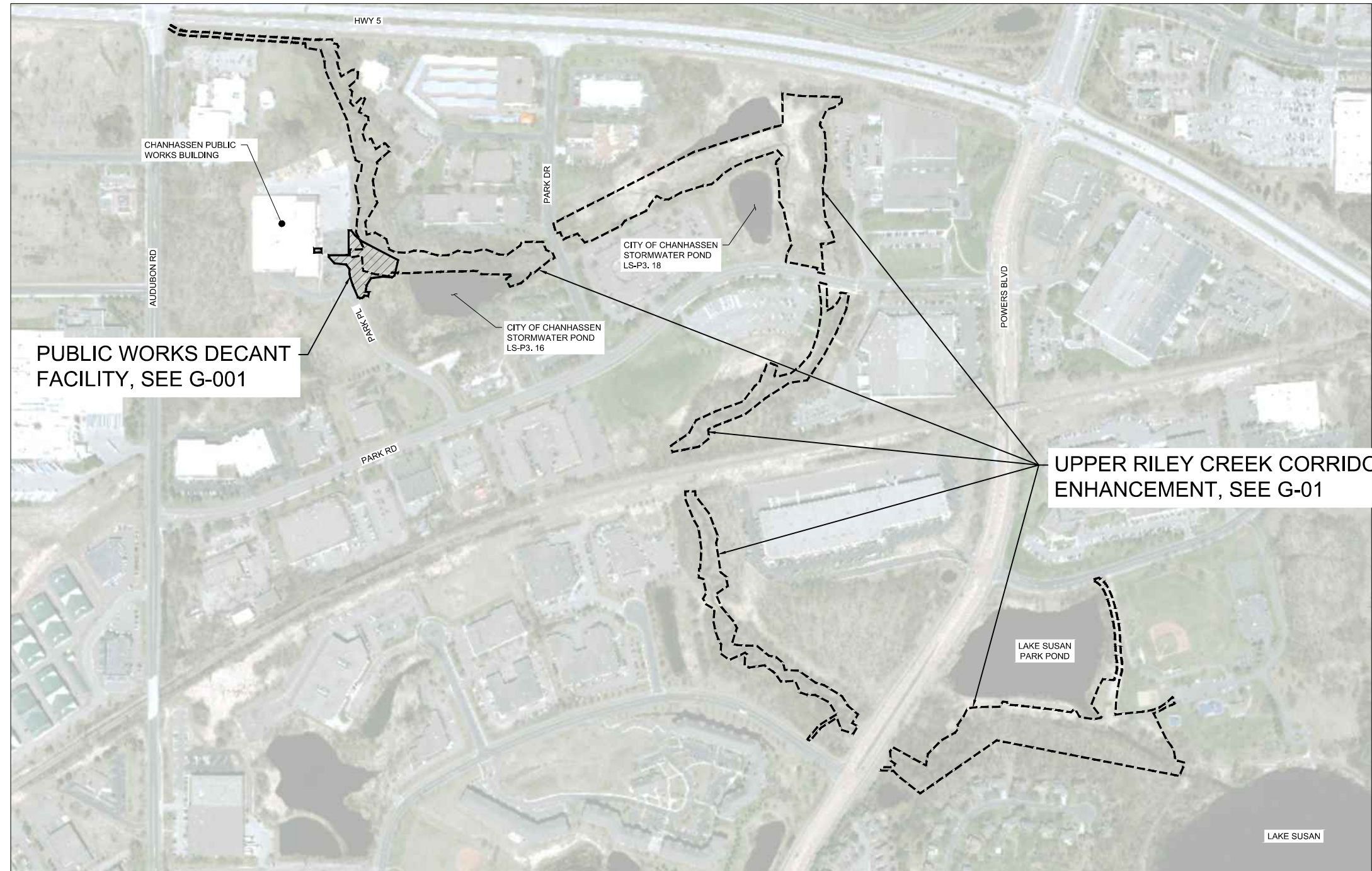
Joe Seidl
Water Resources Engineer
City of Chanhasseen
jseidl@chanhasseenmn.gov
PH. 952-227-1168
FX. 952-227-1170
www.chanhasseenmn.gov

GENERAL NOTES:

1. CONTOUR DATA SHOWN IN THIS PLAN SET IS BASED ON 2021 LIDAR TOPOGRAPHY AND SURVEY PERFORMED BY BARR ENGINEERING IN MARCH 2021.
2. IMAGERY: COPYRIGHT PICTOMETRY INTERNATIONAL CORP AND CARVER COUNTY, MINNESOTA, 2021.
3. HORIZONTAL DATUM AND COORDINATE SYSTEM: CARVER COUNTY COORDINATES, NAD83, US SURVEY FEET.
4. VERTICAL DATUM: NAVD88.



GOPHER STATE ONE CALL:
CALL BEFORE YOU DIG.
1-800-252-1166



VICINITY MAP
NOT TO SCALE

PROJECT DATUM:
HORIZONTAL: MNDOT COUNTY COORDINATES (NAD83), CARVER COUNTY, US FT
VERTICAL: NAVD 88

811 Know what's below.
Call 811 before you dig.

I HEREBY CERTIFY THAT THIS PLAN, SPECIFICATION, OR REPORT WAS PREPARED BY ME OR UNDER MY DIRECT SUPERVISION AND THAT I AM A DULY LICENSED PROFESSIONAL ENGINEER UNDER THE LAWS OF THE STATE OF MINNESOTA.

PRINTED NAME: JESSICA OLSON
SIGNATURE: *Jessica Olson*
DATE: 11/19/2024 LICENSE # 43102

CLIENT PERMIT	10/01/24						
BID				11/19/24			
CONSTRUCTION RECORD				11/19/24			
RELEASED TO/FOR	A	B	C	0	1	2	3

BARR
Project Office:
BARR ENGINEERING CO.
4300 MARKETPOINTE DRIVE
SUITE 200
MINNEAPOLIS, MN 55435
Corporate Headquarters:
Minneapolis, Minnesota
Ph: 1-800-632-2277
Fax: (952) 832-2601
www.barr.com

Scale	AS SHOWN
Date	04/26/2024
Drawn	AWT
Checked	BDP
Designed	BARR
Approved	JCO

RILEY PURGATORY BLUFF CREEK WD
CHANHASSEN, MN

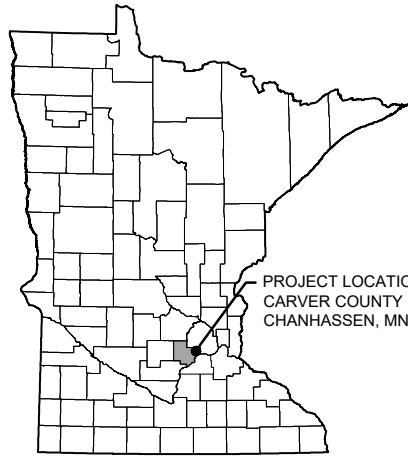
UPPER RILEY CREEK ENHANCEMENT AND DECANT FACILITY
CHANHASSEN, MN
COVER SHEET

BARR PROJECT No.	23270053.14
CLIENT PROJECT No.	
DWG. No.	G-1
REV. No.	0

CADD USER: ANDERS.V. TOI-KANNEN.FEIL; M:DESIGN\23270053.14\TOI\14_CHAN DECANT\23270053.14_G-1.DWG PLOT SCALE: 1/2"=1'-0" PLOT DATE: 11/19/2024 9:28 AM

UPPER RILEY CREEK CORRIDOR ENHANCEMENT PLAN

RILEY PURGATORY BLUFF CREEK WATERSHED DISTRICT



MINNESOTA COUNTY MAP

CONTACTS:

ENGINEER CONTACT:
 Jessica Olson
 Barr Engineering Co.
 325 South Lake Avenue
 Duluth, MN 55802
 218-259-7118
 jolson@barr.com

OWNER'S REPRESENTATIVE CONTACT:
 Terry Jeffery
 Interim District Administrator
 Riley Purgatory Watershed District
 18681 Lake Drive East
 Chanhassen, MN 55317
 952-807-8885
 tjeffery@rpbcdwd.org

PROPERTY OWNER'S REPRESENTATIVE:
 Joe Seidl
 Water Resources Engineer
 City of Chanhassen
 jseidl@chanhassenmn.gov
 PH. 952-227-1168
 FX. 952-227-1170
 www.chanhassenmn.gov

GENERAL NOTES:

- CONTOUR DATA SHOWN IN THIS PLAN SET IS BASED ON 2021 LIDAR TOPOGRAPHY AND SURVEY PERFORMED BY BARR ENGINEERING IN MARCH 2021.
- IMAGERY: COPYRIGHT PICTOMETRY INTERNATIONAL CORP AND CARVER COUNTY, MINNESOTA, 2021.
- HORIZONTAL DATUM AND COORDINATE SYSTEM: CARVER COUNTY COORDINATES, NAD83, US SURVEY FEET.
- VERTICAL DATUM: NAVD88.



GOPHER STATE ONE CALL:
 CALL BEFORE YOU DIG.
 1-800-252-1166



INDEX OF SHEETS

- G-01 TITLE SHEET, PROJECT LOCATION, AND SHEET INDEX
- G-02 STORMWATER POLLUTION PREVENTION PLAN (SWPPP)
- G-03 STORMWATER POLLUTION PREVENTION PLAN (SWPPP)
- G-04 REMOVALS, EROSION CONTROL AND TREE PROTECTION PLAN, R4-A
- G-05 REMOVALS, EROSION CONTROL AND TREE PROTECTION PLAN, R4A
- G-06 REMOVALS, EROSION CONTROL AND TREE PROTECTION PLAN, POND LS-P3.16
- G-07 REMOVALS, EROSION CONTROL AND TREE PROTECTION PLAN, R4-B
- G-08 REMOVALS, EROSION CONTROL AND TREE PROTECTION PLAN, R4-B
- G-09 REMOVALS, EROSION CONTROL AND TREE PROTECTION PLAN, R4-C
- G-10 REMOVALS, EROSION CONTROL AND TREE PROTECTION PLAN, R4-C
- G-11 REMOVALS, EROSION CONTROL AND TREE PROTECTION PLAN, R4-C & R4-D
- G-12 REMOVALS, EROSION CONTROL AND TREE PROTECTION PLAN, R4-D
- G-13 REMOVALS, EROSION CONTROL AND TREE PROTECTION PLAN, R4-D & R4-E
- G-14 REMOVALS, EROSION CONTROL AND TREE PROTECTION PLAN, R4-E
- G-15 REMOVALS, EROSION CONTROL AND TREE PROTECTION PLAN, R4-E
- G-16 EROSION CONTROL DETAILS
- G-17 FLOODPLAIN AND WETLAND BOUNDARIES - HWY 5 TO PARK DR.
- G-18 FLOODPLAIN AND WETLAND BOUNDARIES - PARK DR. TO PARK RD.
- G-19 FLOODPLAIN AND WETLAND BOUNDARIES - PARK RD. TO RAILROAD CROSSING
- G-20 FLOODPLAIN AND WETLAND BOUNDARIES - RAILROAD CROSSING TO POWERS BLVD.
- G-21 FLOODPLAIN AND WETLAND BOUNDARIES - POWERS BLVD. TO LAKE SUSAN

- C-01 SITE LAYOUT
- C-02 TYPICAL STREAM SECTIONS
- C-03 STREAM STABILIZATION PLAN, R4-A (STA. 0+00 - 9+00)
- C-04 STREAM STABILIZATION PROFILE & SECTIONS, R4-A (STA. 0+00 - 9+00)
- C-05 STREAM STABILIZATION PLAN, R4-A (STA. 9+00 - 18+00)
- C-06 STREAM STABILIZATION PROFILE & SECTIONS, R4-A (STA. 9+00 - 18+00)
- C-07 STREAM STABILIZATION PLAN, R4-B (STA. 18+00 - 27+00)
- C-08 STREAM STABILIZATION PROFILE & SECTIONS, R4-B (STA. 18+00 - 27+00)
- C-09 STREAM STABILIZATION PLAN, R4-B (STA. 27+00 - 36+00)
- C-10 STREAM STABILIZATION PROFILE & SECTIONS, R4-B (STA. 27+00 - 36+00)
- C-11 TRIBUTARY STABILIZATION PLAN, R4-B
- C-12 TRIBUTARY STABILIZATION PROFILE & SECTIONS, R4-B
- C-13 STREAM STABILIZATION PLAN, R4-C (STA. 36+00 - 45+00)
- C-14 STREAM STABILIZATION PROFILE & SECTIONS, R4-C (STA. 36+00 - 45+00)
- C-15 STREAM STABILIZATION PLAN, R4-C & R4-D (STA. 45+00 - 54+00)
- C-16 STREAM STABILIZATION PROFILE & SECTIONS, R4-C & R4-D (STA. 45+00 - 54+00)
- C-17 STREAM STABILIZATION PLAN, R4-D (STA. 54+00 - 63+00)
- C-18 STREAM STABILIZATION PROFILE & SECTIONS, R4-D (STA. 54+00 - 63+00)
- C-19 STREAM STABILIZATION PLAN, R4-D & R4-E (STA. 63+00 - 72+00)
- C-20 STREAM STABILIZATION PROFILE & SECTIONS, R4-D & R4-E (STA. 63+00 - 72+00)
- C-21 STREAM STABILIZATION PLAN, R4-E (STA. 72+00 - 81+00)
- C-22 STREAM STABILIZATION PROFILE & SECTIONS, R4-E (STA. 72+00 - 81+00)
- C-23 STREAM STABILIZATION PLAN, R4-E (STA. 81+00 - 86+56)
- C-24 STREAM STABILIZATION PROFILE & SECTIONS, R4-E (STA. 81+00 - 87+00)
- C-25 POND MAINTENANCE PLAN, POND LS-P3.16

- D-01 STREAM STABILIZATION DETAILS
- D-02 STREAM STABILIZATION DETAILS
- D-03 STREAM STABILIZATION DETAILS
- D-04 STREAM STABILIZATION DETAILS
- D-05 STREAM STABILIZATION DETAILS
- D-06 STREAM STABILIZATION DETAILS
- D-07 STREAM STABILIZATION DETAILS
- D-08 STREAM STABILIZATION DETAILS
- D-09 CITY OF CHANHASSEN STANDARD PLATES

- R-01 RESTORATION PLAN (SEE NOTE 1)
- R-02 RESTORATION PLAN (SEE NOTE 1)
- R-03 RESTORATION PLAN
- R-04 RESTORATION PLAN
- R-05 RESTORATION PLAN
- R-06 RESTORATION PLAN
- R-07 RESTORATION PLAN
- R-08 RESTORATION PLAN
- R-09 RESTORATION PLAN
- R-10 RESTORATION PLAN
- R-11 RESTORATION PLAN
- R-12 RESTORATION PLAN
- R-13 RESTORATION PLAN
- R-14 PLANTING DETAILS
- R-15 PLANTING DETAILS

NOTES:
 1. IF DECANT FACILITY ALTERNATIVE IS SELECTED, SEE SHEET C-008 OF DECANT PLANS FOR ADDITIONAL RESTORATION PLAN.



1 PLAN: PROJECT LOCATION

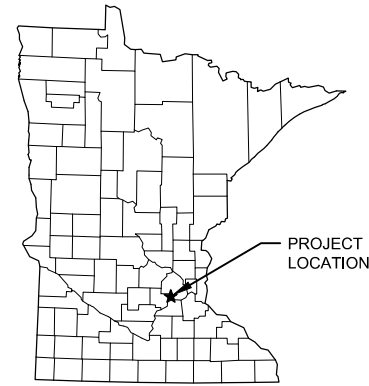
100% DESIGN
 ISSUED FOR BID

I HEREBY CERTIFY THAT THIS PLAN, SPECIFICATION, OR REPORT WAS PREPARED BY ME OR UNDER MY DIRECT SUPERVISION AND THAT I AM A DULY LICENSED PROFESSIONAL ENGINEER UNDER THE LAWS OF THE STATE OF MINNESOTA.				CLIENT 08/31/22 08/17/23				Project Office: BARR ENGINEERING CO. 4300 MARKETPOINTE DRIVE Suite 200 MINNEAPOLIS, MN 55435 Ph: 1-800-632-2277 Fax: (952) 832-2601 www.barr.com				Scale AS SHOWN Date 10/11/2024 Drawn EPF Checked JCO Designed BARR Approved SAS		RILEY PURGATORY BLUFF CREEK WD CHANHASSEN, MN.		UPPER RILEY CREEK CORRIDOR ENHANCEMENT PLAN TITLE SHEET, PROJECT LOCATION & SHEET INDEX		BARR PROJECT No. 23/27-0053.14 CLIENT PROJECT No.	
PRINTED NAME JESSICA OLSON SIGNATURE [Signature] DATE 10/11/2023 LICENSE # 43102				RELEASED TO/FOR A B C 0 1 2 3 DATE RELEASED				Corporate Headquarters: Minneapolis, Minnesota Ph: 1-800-632-2277				DWG. No. G-01 REV. No. 1							
NO.	BY	CHK	APP.	DATE	REVISION DESCRIPTION														
1	EPF	JCO	SAS	10/11/2024	ADDITION OF DECANT FACILITY OPTION														
0	EPF	JCO	SAS	08/23/2023	ISSUED FOR BID														

UPPER RILEY CREEK PUBLIC WORKS DECANT FACILITY

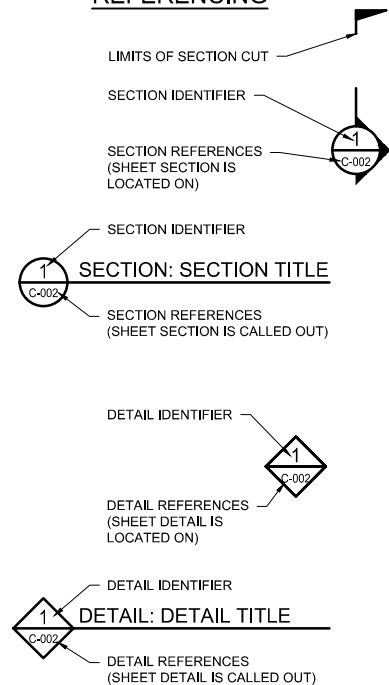
RILEY PURGATORY BLUFF CREEK WD

CHANHASSEN, MN



LOCATION MAP
NOT TO SCALE

REFERENCING



VICINITY MAP
NOT TO SCALE

SHEET	TITLE
G-001	COVER SHEET, INDEX AND VICINITY MAP
C-001	EXISTING CONDITIONS
C-002	EROSION CONTROL AND REMOVALS PLAN
C-003	PROPOSED SITE LAYOUT
C-004	PROPOSED GRADING PLAN
C-005	SITE LAYOUT SECTIONS AND DETAILS
C-006	STORMWATER FILTRATION BASIN PLAN, SECTIONS, AND DETAILS
C-007	POND OVERFLOW SECTION AND DETAILS
C-008	SITE RESTORATION PLAN
C-009	DETAILS AND CITY PLATES
C-010	CITY PLATES
C-011	CITY PLATES
S-001	SPECIFICATIONS
S-002	SPECIFICATIONS
S-003	SPECIAL INSPECTIONS
S-004	FOUNDATION AND WALL PLAN
S-005	PEMB ROOF FRAMING PLAN
S-006	FOUNDATION SECTIONS
S-007	FOUNDATION SECTIONS
S-008	TYPICAL DETAILS
S-009	TYPICAL DETAILS
E-001	ELECTRICAL PLAN
E-002	ELECTRICAL DETAILS AND SCHEMATIC

NOTES:

1. DRAWINGS LISTED BUT FADED ARE NOT INCLUDED IN THIS SUBMITTAL, BUT ARE ANTICIPATED IN FUTURE SUBMITTALS.

ABBREVIATIONS AND SYMBOLS

APPROX	APPROXIMATE
ASCE	AMERICAN SOCIETY OF CIVIL ENGINEERS
ASTM	AMERICAN SOCIETY FOR TESTING AND MATERIALS
BOC	BACK OF CURB
CONC	CONCRETE
DIP	DUCTILE IRON PIPE
EL	ELEVATION
EOB	EDGE OF BITUMINOUS
EOC	EDGE OF CONCRETE
F.F.E.	FINISHED FLOOR ELEVATION
GB	GRADE BREAK
HARN	HIGH ACCURACY REFERENCE NETWORK
ID	INSIDE DIAMETER
IE	INVERT ELEVATION
MAX	MAXIMUM
MIN	MINIMUM
NAD	NORTH AMERICAN DATUM
NAVD	NORTH AMERICAN VERTICAL DATUM
NGVD	NATIONAL GEODETIC VERTICAL DATUM
NO.	NUMBER
OC	ON CENTER
PEMB	PRE-ENGINEERED METAL BUILDING
PVC	POLYVINYL CHLORIDE
ROW	RIGHT-OF-WAY
TBD	TO BE DETERMINED
TYP	TYPICAL
@	AT
Ø	DIAMETER

NOTES:

1. COMPLY WITH ALL APPLICABLE LOCAL, STATE, AND FEDERAL CODES, PERMITS, AND REGULATIONS.
2. VERIFY ALL QUANTITIES, GRADES, AND DIMENSIONS.
3. TOPOGRAPHIC INFORMATION BASED ON SITE SURVEYS CONDUCTED BY HANSEN THORP PELLINEN OLSON, INC. IN JANUARY OF 2023 AND BY BARR ENGINEERING CO. IN FEBRUARY OF 2024.
4. FIELD-LOCATE ALL SITE UTILITIES (PRIVATE AND PUBLIC) PRIOR TO STARTING THE WORK. ALL UTILITIES SHOWN ON THE PLANS ARE APPROXIMATE. ANY UTILITIES DAMAGED BY CONTRACTOR SHALL BE REPAIRED TO THE SATISFACTION OF UTILITY OWNER AT CONTRACTOR'S COST.

PROJECT DATUM:
HORIZONTAL: MNDOT COUNTY COORDINATES (NAD83), CARVER COUNTY, US FT
VERTICAL: NAVD 88



NO.	BY	CHK.	APP.	DATE	REVISION DESCRIPTION

I HEREBY CERTIFY THAT THIS PLAN, SPECIFICATION, OR REPORT WAS PREPARED BY ME OR UNDER MY DIRECT SUPERVISION AND THAT I AM A DULY LICENSED PROFESSIONAL ENGINEER UNDER THE LAWS OF THE STATE OF MINNESOTA.

PRINTED NAME: **BRYAN D. PITTERLE**

SIGNATURE: *Bryan D. Pitterle*

DATE: 11/19/2024 LICENSE # 55568

CLIENT	PERMIT	BID	CONSTRUCTION	RECORD
05/10/24	06/18/24	10/01/24	11/19/24	11/19/24

RELEASED TO/FOR	A	B	C	0	1	2	3
DATE RELEASED							

Project Office:
BARR ENGINEERING CO.
4300 MARKETPOINTE DRIVE
SUITE 200
MINNEAPOLIS, MN 55435

Corporate Headquarters:
Minneapolis, Minnesota
Ph: 1-800-632-2277
Fax: (952) 832-2601
www.barr.com

Scale	AS SHOWN
Date	04/26/2024
Drawn	AWT
Checked	BDP
Designed	BARR
Approved	BDP

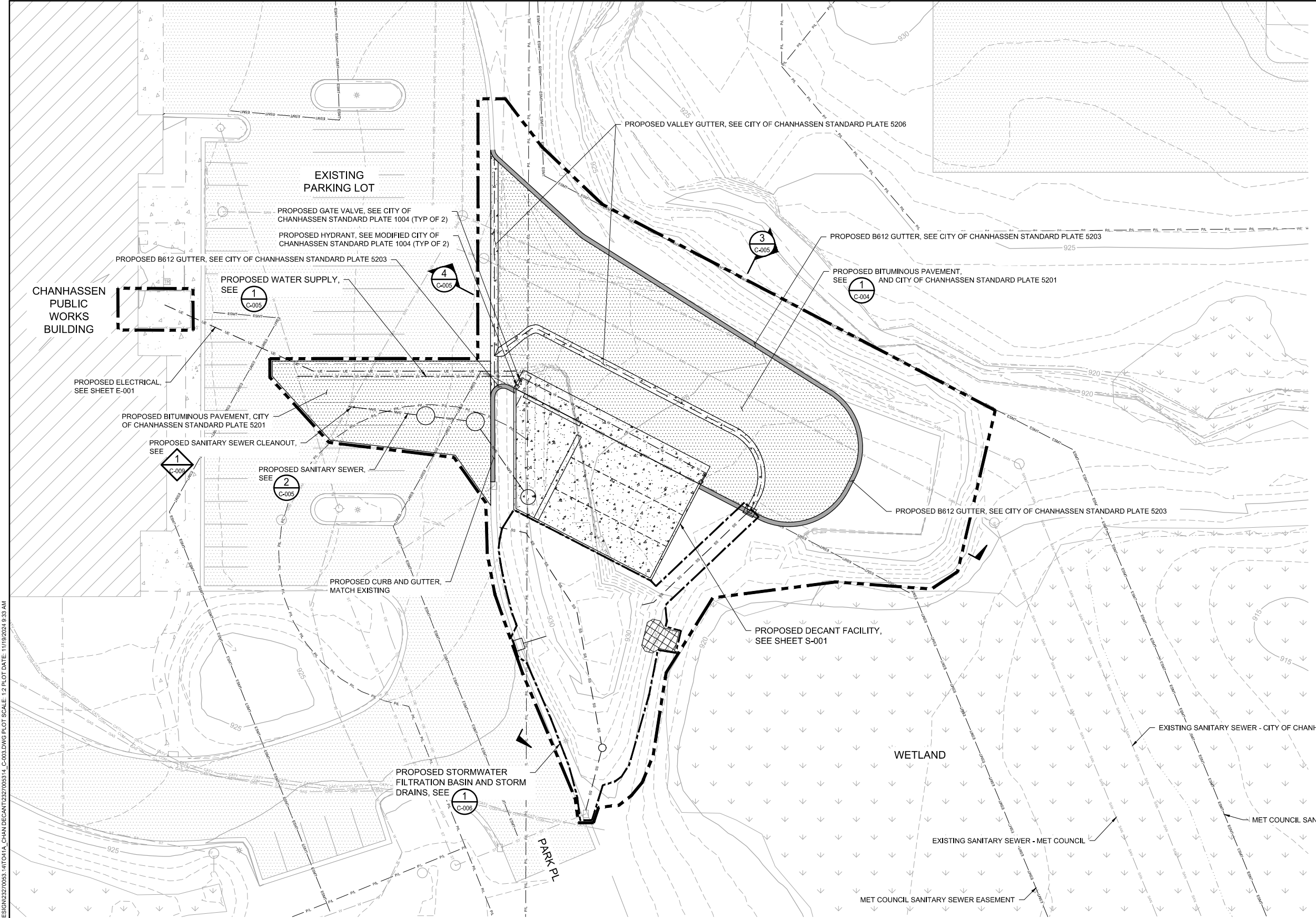
RILEY PURGATORY BLUFF CREEK WD
CHANHASSEN, MN

UPPER RILEY CREEK PUBLIC WORKS DECANT FACILITY
CHANHASSEN, MN

COVER SHEET, INDEX, AND
VICINITY MAP

BARR PROJECT No.	23270053.14
CLIENT PROJECT No.	
DWG. No.	G-001
REV. No.	0

CADD USER: ANDERS.W. TOULONEN; FILE: M:\DESIGN\23270053.14\T0414_CHAN DECANT\23270053.14_G-001.DWG; PLOT SCALE: 1/2; PLOT DATE: 11/19/2024 9:52 AM

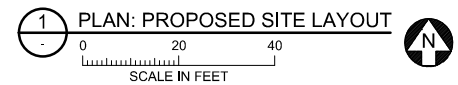


LEGEND

- CONSTRUCTION LIMITS
- - - - - PROPERTY LINE
- - - - - EXISTING EASEMENT
- - - - - EXISTING MAJOR CONTOUR
- - - - - EXISTING MINOR CONTOUR
- - - - - EXISTING FENCE
- - - - - EXISTING RETAINING WALL
- - - - - EXISTING CABLE TV
- - - - - EXISTING COMMUNICATIONS LINE
- - - - - EXISTING OVERHEAD ELECTRIC
- - - - - EXISTING GAS LINE
- - - - - EXISTING SANITARY SEWER
- - - - - EXISTING STORM SEWER
- - - - - EXISTING WATER LINE
- [Pattern] EXISTING CONCRETE
- [Pattern] EXISTING BITUMINOUS PAVEMENT
- [Pattern] EXISTING STRUCTURE/EQUIPMENT
- [Pattern] EXISTING WETLAND
- [Symbol] EXISTING HYDRANT
- [Symbol] EXISTING MANHOLE
- [Symbol] EXISTING STORM SEWER INLET
- [Symbol] EXISTING LIGHT POLE
- [Symbol] EXISTING TREE
- - - - - PROPOSED SANITARY SEWER
- - - - - PROPOSED STORM SEWER
- - - - - PROPOSED WATER LINE
- - - - - PROPOSED FLOWLINE
- - - - - PROPOSED CURB AND GUTTER
- [Pattern] PROPOSED CONCRETE
- [Pattern] PROPOSED BITUMINOUS PAVEMENT
- [Pattern] PROPOSED REVEGETATION

NOTES:

1. RESTORE ALL AREAS DISTURBED BY CONSTRUCTION TO EXISTING GRADE OR PER GRADING PLAN.
2. GRADE SITE SO THAT IT DRAINS AWAY FROM ALL BUILDINGS, PADS, PAVEMENTS, AND STRUCTURES.
3. COORDINATE WITH OWNER PRIOR TO ANY WORK AFFECTING THE EXISTING WATERLINES, SANITARY SEWERS, OR OTHER UTILITIES.
4. SEE SHEET E-001 FOR ELECTRICAL UTILITIES.



1 PLAN: PROPOSED SITE LAYOUT

PROJECT DATUM:
 HORIZONTAL: MNDOT COUNTY COORDINATES (NAD83), CARVER COUNTY, US FT
 VERTICAL: NAVD 88

NO.	BY	CHK.	APP.	DATE	REVISION DESCRIPTION

I HEREBY CERTIFY THAT THIS PLAN, SPECIFICATION, OR REPORT WAS PREPARED BY ME OR UNDER MY DIRECT SUPERVISION AND THAT I AM A DULY LICENSED PROFESSIONAL ENGINEER UNDER THE LAWS OF THE STATE OF MINNESOTA.

PRINTED NAME: **BRYAN D. PITTLERLE**
 SIGNATURE: *Bryan Pittlerle*
 DATE: 11/19/2024 LICENSE # 55588

CLIENT PERMIT BID CONSTRUCTION RECORD	05/10/24	08/18/24	10/01/24				
RELEASED TO/FOR	A	B	C	0	1	2	3
DATE RELEASED							

BARR Project Office:
 BARR ENGINEERING CO.
 4300 MARKETPOINTE DRIVE
 SUITE 200
 MINNEAPOLIS, MN 55435
 Corporate Headquarters:
 Minneapolis, Minnesota
 Ph: 1-800-632-2277
 Ph: (952) 832-2601
 www.barr.com

Scale	AS SHOWN
Date	04/26/2024
Drawn	AWT
Checked	BDP
Designed	BARR
Approved	BDP

RILEY PURGATORY BLUFF CREEK WD
 CHANHASSEN, MN

UPPER RILEY CREEK PUBLIC WORKS DECANT FACILITY
 CHANHASSEN, MN
PROPOSED SITE LAYOUT

BARR PROJECT No.	23270053.14
CLIENT PROJECT No.	
DWG. No.	C-003
REV. No.	0

CADD USER: ANDERS W. TOLMANEN FILE: M:\DESIGN\23270053.14\TO14A_CHAN DECANT\23270053.14_C-003.DWG PLOT SCALE: 1:2 PLOT DATE: 11/19/2024 9:33 AM