



RILEY
PURGATORY
BLUFF CREEK
WATERSHED DISTRICT



2018 Calendar

PROTECT. MANAGE. RESTORE.

Managers, Staff & Consultants



Board of Managers

The Riley Purgatory Bluff Creek Watershed District Board of Managers meets on the first Wednesday of each month, 7:00 pm, at the District Office: 18681 Lake Drive East, Chanhassen. Any changes to the schedule are posted on the District website: rpbcwd.org.

Left to right

Dorothy Pedersen (Shorewood)
Richard Chadwick (Chanhassen)
Leslie Yetka (Minnetonka)
Dick Ward (Eden Prairie)
Jill Crafton (Bloomington)

Term expires

July 2020
July 2018
July 2019
July 2020
July 2018

Staff

Dr. Claire Bleser
Administrator
952-607-6512

Terry Jeffery
Project & Permit
Manager
952-807-6885

Michelle Jordan
Community
Outreach Coord.
952-607-6481

Josh Maxwell
Water Resource
Coord.
952-607-6486

Zach Dickhausen
Water Resource
Tech.
952-607-6036

Consultants

Scott Sobiech
District Engineer
Barr Engineering
952-832-2755

Smith Partners PLLP
Legal Advisor
612-344-1400

49 Years of Watershed Protection

The Riley Purgatory Bluff Creek Watershed District was established on July 31, 1969. The District is a local government unit charged with protecting, managing, and restoring water resources. It encompasses all the land that drains into any of the three creeks in its name. At about 50 square miles, it includes parts of seven cities (Bloomington, Chanhassen, Chaska, Deephaven, Eden Prairie, Minnetonka, and Shorewood), and two counties (Carver and Hennepin).

The District is led by residents and water professionals. Five managers (four appointed by the Hennepin County Commissioners and one by Carver), serve three-year terms directing District activities. The District partners with local communities to identify top priorities and plan, implement, and manage efforts to protect clean water. The District works to educate and engage community members in this stewardship. Watershed activities are funded by property tax levies.

Thank you to Forster and Bisek

In 2017, two members of the Board of Managers completed their terms. Former President Perry Forster dedicated 23 years of service



to the watershed. Under his leadership, the District embarked on a variety of water quality projects and completed two management plans. Another highlight of his tenure was the hiring of the first District administrator. The District now has 5 staff members who run data collection, permitting, community outreach and administration. By building this team, the District has greatly grown its capacity to protect clean water. Manager Mary Bisek joined the Board of Managers in 2012. She was an active voice in getting the District to think more about groundwater conservation and water reuse. She also provided thoughtful insight on the importance of native plants while promoting high standards of governance. Both managers were part of ordering the first creek restoration project and two groundwater conservation projects, and led the District in the development of the 4th generation water management plan. They will be missed but we wish them the best and look forward to seeing them around the watershed.

Welcome to Pedersen and Ward

The District welcomes Manager Pedersen and Manager Ward to the watershed board! Manager Pedersen has served on the District's Citizen Advisory Committee for several years, and volunteered with District programs including the Master Water Stewards. Pedersen is also a Master Gardener, and her professional work has ranged from human resources, to landscape design. Manager Ward is an active member of the community. He is engaged in various volunteer roles in organizations like Big Brothers/ Big Sisters and the PROP shop. In addition to his volunteer work, Manager Ward is a licensed real estate broker and property manager. We look forward to the perspectives both managers bring, as together with the rest of the board they guide the District in its next 10-Year Management Plan.



Community prepares for changing climate

Climate change is one of the greatest challenges facing society today. In Minnesota, we face risks due to increases in extreme heat, extreme rainfall, higher summertime dew points, warmer winters, and the intensity of severe storms. Proactive planning is the economically efficient route to climate adaptation, rather than reacting to the impacts of heat, storms, ice, and warm winters as they occur.

Recognizing this, the District participated in a workshop series to identify opportunities to build resilience related to local climate change. The goal was to build relationships across the community, create a shared knowledge base, and harvest potential strategies of adaptation.

You can read the full summary of the results on our website (rpbcwd.org), and within the new 10-Year Management Plan.



Master water stewards make waves

The District graduated its second cohort of Master Water Stewards in 2017. The volunteer training program equips District residents with the knowledge, skills, and network they need to become community leaders in protecting clean water. For their capstone project, two District stewards completed a shoreline restoration on Duck Lake in 2017. With the help of many volunteers, invasive species were removed, the shoreline was stabilized, and native plants were installed. The project was funded in part by a cost-share grant from the District.

Master Water Stewards also volunteer in their communities. Highlights from 2017 included a community clean-up for water in Chanhassen spearheaded by a District steward, many hours of tabling at community events, field work with our water monitoring team, and piles and piles of trash pulled from local lakes.

The Master Water Stewards is a partnership program with the Freshwater Society. Learn more about becoming a steward, or how stewards can help you in your good work at masterwaterstewards.org.



Fire station becomes a leader in groundwater conservation

Explore our yard and discover sustainable practices you can take home to yours

This firestation uses practices to conserve water & promote healthy habitat. Explore the grounds to see how the City of Eden Prairie is reducing its water usage, and how you can help by:

- Installing a rainbarrel or cistern.** Collecting and reusing rainwater reduces ground water use.
- Planting turfgrass alternatives.** Low mow and native grasses need less water. They also decrease pollution, like fertilizer, to local rivers, lakes, and wetlands.
- Using native plants.** These plants provide habitat for pollinators, birds, and other animals.

We Use Rainwater

Through a grant from the Metropolitan Council, the District partnered with the city of Eden Prairie to implement water conservation practices at Fire Station Two. A cistern captures and treats rainwater from the station's roof. This can then be used for irrigating the grounds and washing fire trucks.

A cost-sharing grant from the District also supported the transition of the grounds to low-mow grasses and native plants. This type of landscaping requires less water and upkeep. Both practices also help to reduce stormwater runoff and pollution.

Signs along the trails invite visitors to explore, and to get involved by taking these practices back to their homes, workplaces, and gathering spaces.



Planning for the future 2018 brings a new 10-Year Management Plan.
Explore it on our website: rpbcwd.org

DISTRICT OFFICE:

18681 Lake Drive East
Chanhassen, MN
55317


CONTACT INFO:

952-607-6512
info@rpbcwd.org
www.rpbcwd.org



Ice crystal patterns make frozen art

JANUARY 2018

| SUNDAY | MONDAY | TUESDAY | WEDNESDAY | THURSDAY | FRIDAY | SATURDAY |
|-----------|--|----------------------|---|---|-----------|-----------|
| | 1 ○ Full moon <i>New Year's Day</i> | 2 | 3 RPBCWD Board Meeting 7:00 PM, District Office | 4 | 5 | 6 |
| 7 | 8 | 9 | 10 | 11 | 12 | 13 |
| 14 | 15 <i>Martin Luther King Jr. Day</i> | 16 ● New moon | 17 | 18 | 19 | 20 |
| 21 | 22 | 23 | 24 | 25 | 26 | 27 |
| 28 | 29 | 30 | 31 ○ Full moon |  | | |

Youth programs

Stewardship can start at any age! The District works to engage school groups in hands-on learning. Interested in having us come to your school? Contact us about programs and presentations that are available. 952-607-6512



A black-capped chickadee enjoys a meal at a homemade feeder

FEBRUARY 2018

| SUNDAY | MONDAY | TUESDAY | WEDNESDAY | THURSDAY | FRIDAY | SATURDAY |
|--------|------------------------------|--|--|---|-------------------------------|----------|
| | | | | 1 | 2 <i>Groundhog Day</i> | 3 |
| 4 | 5 | 6 | 7 RPBCWD Board Meeting 7:00 PM, District Office | 8 | 9 | 10 |
| 11 | 12 | 13 <i>Maha Shivaratri Shrove Tuesday/Mardi Gras</i> | 14 <i>Valentine's Day</i> | 15 ● New moon | 16 <i>Chinese New Year</i> | 17 |
| 18 | 19 <i>Presidents' Day</i> | 20 | 21 | 22 | 23 | 24 |
| 25 | 26 | 27 | 28 |  | | |

Be salt smart

What happens to the salt we put down to melt ice? It washes into stormdrains and pollutes local lakes, streams, and wetlands. You can help protect clean water by following these simple tips:

- 1. Shovel first!** Clear walkways and other areas before the snow turns to ice.
- 2. Scatter!** A coffee mug of salt covers 60 ft of sidewalk, or 2 parking spots. A push spreader helps too!
- 3. Switch!** When road temperature is below 15 degrees F, salt doesn't work. Try a little sand for traction.
- 4. Sweep up extra salt!** Salt only works when dissolved. Sweep up any extra you can see and reuse.



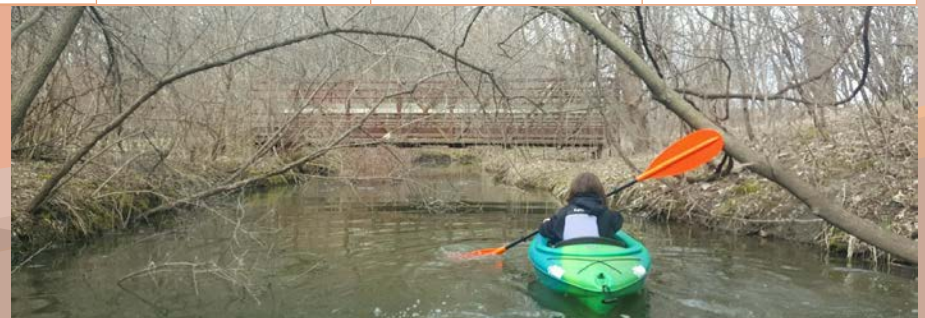
Barred Owls are easiest to find when they are active at night - they can be identified by their hooting call: "who cooks for you?" Visit forests near water, try imitating the call with your own voice and wait quietly. If you're lucky, a territorial Barred Owl might fly in to investigate you.

MARCH 2018

| SUNDAY | MONDAY | TUESDAY | WEDNESDAY | THURSDAY | FRIDAY | SATURDAY |
|--|--------|---------------------------------|--|------------------|------------------------------|---|
| | | | | 1 ○ Full moon | 2 <i>Holi</i> | 3 |
| 4 | 5 | 6 | 7 RPBCWD Board Meeting 7:00 PM, District Office | 8 | 9 | 10 |
| 11 <i>Daylight Saving Time Begins</i> | 12 | 13 | 14 | 15 | 16 | 17 ● New moon <i>St. Patrick's Day</i> |
| 18 | 19 | 20 <i>Spring Equinox</i> | 21 | 22 | 23 | 24 |
| 25 | 26 | 27 | 28 | 29 | 30 <i>Good Friday</i> | 31 ○ Full moon <i>First Day of Passover</i> |

Explore your watershed

Grab one of our parks and trails maps, and find your new favorite spot to explore. Or join us for one of our many community events throughout the year!





New plants sprout at the Purgatory Creek restoration

APRIL 2018

| SUNDAY | MONDAY | TUESDAY | WEDNESDAY | THURSDAY | FRIDAY | SATURDAY |
|----------------------------------|-----------|--|---|-----------|-----------|-----------|
| 1 <i>Easter Sunday</i> | 2 | 3 | 4 RPBCWD Board Meeting 7:00 PM, District Office | 5 | 6 | 7 |
| 8 | 9 | 10 | 11 | 12 | 13 | 14 |
| 15 ● New moon | 16 | 17 | 18 | 19 | 20 | 21 |
| 22 <i>Earth Day</i> | 23 | 24 | 25 | 26 | 27 | 28 |
| 29 ○ Full moon | 30 |  | | | | |

Gathering data

Good decisions are based on good data. District staff monitor local water bodies to determine how healthy they are, identify projects to improve them, and assess how successful those projects are. If you see our sampling team out and about, stop and say hi!



A bee enjoys a stop in a pollinator garden

MAY 2018

| SUNDAY | MONDAY | TUESDAY | WEDNESDAY | THURSDAY | FRIDAY | SATURDAY |
|---------------------------|---------------------------|----------------|--|----------|--------|---------------------------|
| | | 1 | 2 RPBCWD Board Meeting 7:00 PM, District Office | 3 | 4 | 5 <i>Cinco de Mayo</i> |
| 6 | 7 | 8 | 9 | 10 | 11 | 12 |
| 13 <i>Mother's Day</i> | 14 | 15 ● New moon | 16 <i>Ramadan starts</i> | 17 | 18 | 19 |
| 20 <i>Shavuot</i> | 21 | 22 | 23 | 24 | 25 | 26 |
| 27 | 28 <i>Memorial Day</i> | 29 ○ Full moon | 30 | 31 | | |

Conserve groundwater

Did you know: water from our taps comes from aquifers deep underground. It is a limited resource, and you can join us in protecting and conserving it. Native plant gardens are a great choice since they require less water (and provide pollinator habitat!). When you do need to water your flower gardens or lawn, consider using rainwater from a rain barrel or cistern!





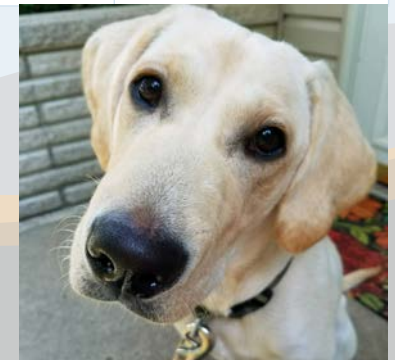
Dragonflies flying over Purgatory Creek Park in Minnetonka

JUNE 2018

| SUNDAY | MONDAY | TUESDAY | WEDNESDAY | THURSDAY | FRIDAY | SATURDAY |
|---------------------|--------|---------|--|------------------------|--------|----------|
| | | | | | 1 | 2 |
| 3 | 4 | 5 | 6 RPBCWD Board Meeting 7:00 PM, District Office | 7 | 8 | 9 |
| 10 | 11 | 12 | 13 ● New moon | 14 | 15 | 16 |
| 17 | 18 | 19 | 20 | 21 | 22 | 23 |
| <i>Father's Day</i> | | | | <i>Summer Solstice</i> | | |
| 24 | 25 | 26 | 27 | 28 ○ Full moon | 29 | 30 |

Pick up for clean water


Pet waste is a problem for local lakes, creeks and wetlands. If left on the land, it gets washed into waterbodies when it rains. There it becomes food for green algae, and can spread bacteria. Whether on a trail, in a dog park, or your neighborhood, picking up after Fido is an act of clean water stewardship!





A shoreline buffer on Mitchell Lake protects clean water & creates habitat

JULY 2018

| SUNDAY | MONDAY | TUESDAY | WEDNESDAY | THURSDAY | FRIDAY | SATURDAY |
|--------|--------|---------|---|---------------|----------------|----------|
| 1 | 2 | 3 | 4 RPBCWD Board Meeting 7:00 PM, District Office* (*due to the holiday, this meeting will be rescheduled. Updates at: rpbcbd.org) Independence Day | 5 | 6 | 7 |
| 8 | 9 | 10 | 11 | 12 ● New moon | 13 | 14 |
| 15 | 16 | 17 | 18 | 19 | 20 | 21 |
| 22 | 23 | 24 | 25 | 26 | 27 ○ Full moon | 28 |
| 29 | 30 | 31 |  | | | |

Interested in a shoreline buffer, raingarden, or cistern of your own? The District's cost-share program offers grants and technical guidance to help you in your good work!

**Grants
for clean
water**



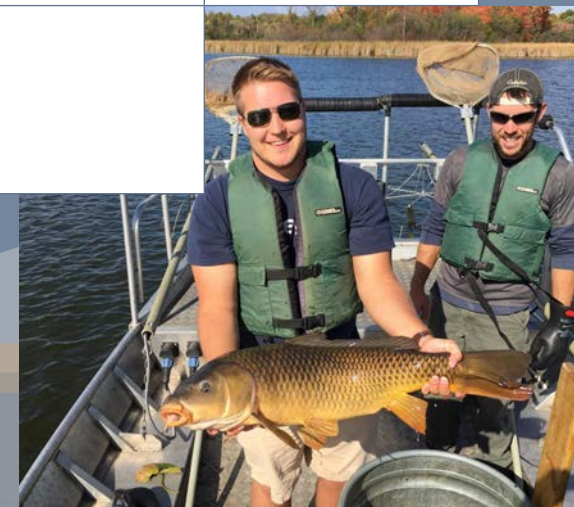
A calm day on Lotus Lake

AUGUST 2018

| SUNDAY | MONDAY | TUESDAY | WEDNESDAY | THURSDAY | FRIDAY | SATURDAY |
|----------------|--------|---------|--|----------|--------|---|
| | | | 1 RPBCWD Board Meeting 7:00 PM, District Office | 2 | 3 | 4 |
| 5 | 6 | 7 | 8 | 9 | 10 | 11 ● New moon |
| 12 | 13 | 14 | 15 | 16 | 17 | 18 |
| 19 | 20 | 21 | 22 | 23 | 24 | 25 |
| 26 ○ Full moon | 27 | 28 | 29 | 30 | 31 |  |

Volunteer with us


Are you curious about the work we do? Interested in getting your feet wet and helping us protect clean water? Volunteer with our water resource monitoring crew and explore your watershed in a new way!





Early autumn on Silver Lake

SEPTEMBER 2018

| SUNDAY | MONDAY | TUESDAY | WEDNESDAY | THURSDAY | FRIDAY | SATURDAY |
|-----------------|--|---------|--|----------|--------|---------------------------|
| | | | | | | 1 |
| 2 | 3 <i>Labor Day</i> | 4 | 5 RPBCWD Board Meeting 7:00 PM, District Office | 6 | 7 | 8 |
| 9 ● New moon | 10 <i>Rosh Hashana</i> | 11 | 12 | 13 | 14 | 15 |
| 16 | 17 | 18 | 19 <i>Yom Kippur</i> | 20 | 21 | 22 <i>Fall Equinox</i> |
| 23 | 24 ○ Full moon <i>First Day of Sukkot</i> | 25 | 26 | 27 | 28 | 29 |
| 30 |  | | | | | |


Protect manage restore

Restoring water bodies that have been polluted is an important part of the District's work. Also crucial is protecting healthy and unique resources. For example, did you know that Silver Lake has wild rice? If we want to keep this rare amenity, we need to work to protect and improve Silver Lake.



Fall color along Riley Creek

OCTOBER 2018

| SUNDAY | MONDAY | TUESDAY | WEDNESDAY | THURSDAY | FRIDAY | SATURDAY |
|-----------|--|---------------------------|---|---|-----------|-----------|
| | 1 | 2 | 3 RPBCWD Board Meeting 7:00 PM, District Office | 4 | 5 | 6 |
| 7 | 8 ● New moon <i>Columbus Day</i> | 9 <i>Navaratri</i> | 10 | 11 | 12 | 13 |
| 14 | 15 | 16 | 17 | 18 | 19 | 20 |
| 21 | 22 | 23 | 24 ○ Full moon | 25 | 26 | 27 |
| 28 | 29 | 30 | 31 <i>Halloween</i> <i>Día de los Muertos Starts</i> |  | | |

Learn with us

The District offers events and activities year-round. Come to a raingarden workshop in the spring, or join us for Cycle the Creek every Fall. There's always something to learn and discover!



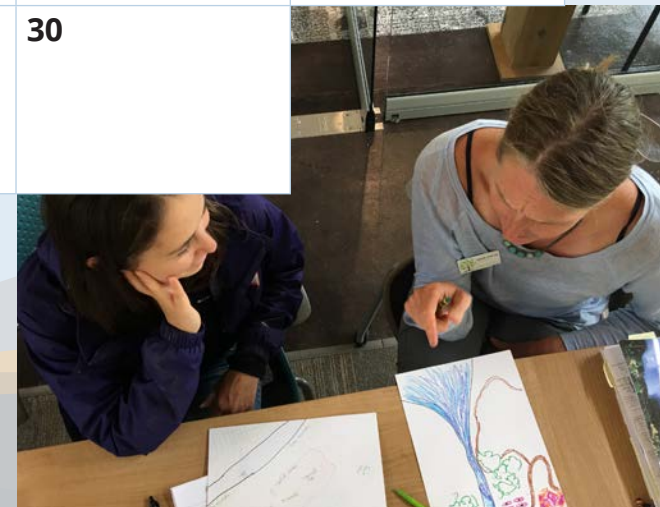
A relaxing afternoon on Staring Lake

NOVEMBER 2018

| SUNDAY | MONDAY | TUESDAY | WEDNESDAY | THURSDAY | FRIDAY | SATURDAY |
|-----------------------------------|------------------------------|---------|---|---------------------|--------------------------------|----------|
| | | | | 1 | 2 | 3 |
| | | | | | <i>Dia de los Muertos Ends</i> | |
| 4 | 5 | 6 | 7 ● New moon RPBCWD Board Meeting 7:00 PM, District Office | 8 | 9 | 10 |
| <i>Daylight Savings Time Ends</i> | | | | | | |
| 11 | 12 | 13 | 14 | 15 | 16 | 17 |
| <i>Veterans Day</i> | <i>Veterans Day Observed</i> | | | | | |
| 18 | 19 | 20 | 21 | 22 | 23 ○ Full moon | 24 |
| | | | | <i>Thanksgiving</i> | | |
| 25 | 26 | 27 | 28 | 29 | 30 | |

Supporting educators

Teachers do important work in our communities, and we want to support them! The District offers trainings, grants, kits, and in-classroom resources each year to help grow water education.





Tracks in the snow from winter explorers on Round Lake

DECEMBER 2018

| SUNDAY | MONDAY | TUESDAY | WEDNESDAY | THURSDAY | FRIDAY | SATURDAY |
|--------|-----------------------------------|---|--|----------|------------------------------|----------------|
| | | | | | | 1 |
| 2 | 3 <i>First Day of Chanukah</i> | 4 | 5 RPBCWD Board Meeting 7:00 PM, District Office | 6 | 7 ● New moon | 8 |
| 9 | 10 | 11 | 12 | 13 | 14 | 15 |
| 16 | 17 | 18 | 19 | 20 | 21 <i>Winter Solstice</i> | 22 ○ Full moon |
| 23 | 24 | 25 <i>Christmas Day</i> | 26 <i>Kwanzaa</i> | 27 | 28 | 29 |
| 30 | 31 <i>New Year's Eve</i> | <h2>Managing invasives</h2> <p>The District works to manage aquatic invasive species, like common carp and curlyleaf pondweed. If left unchecked, these fish and plants can harm water quality and native species. You can help reduce their spread by cleaning your fishing gear any time of year!</p> | | | | |



2017 AT A GLANCE

With three creeks, over a dozen lakes, many acres of wetlands, and seven cities, there are many things to do and places to be in the District. Explore the map below to find out where we've been, and what we've done in 2017.

17

District projects

8

Cost-share projects

40

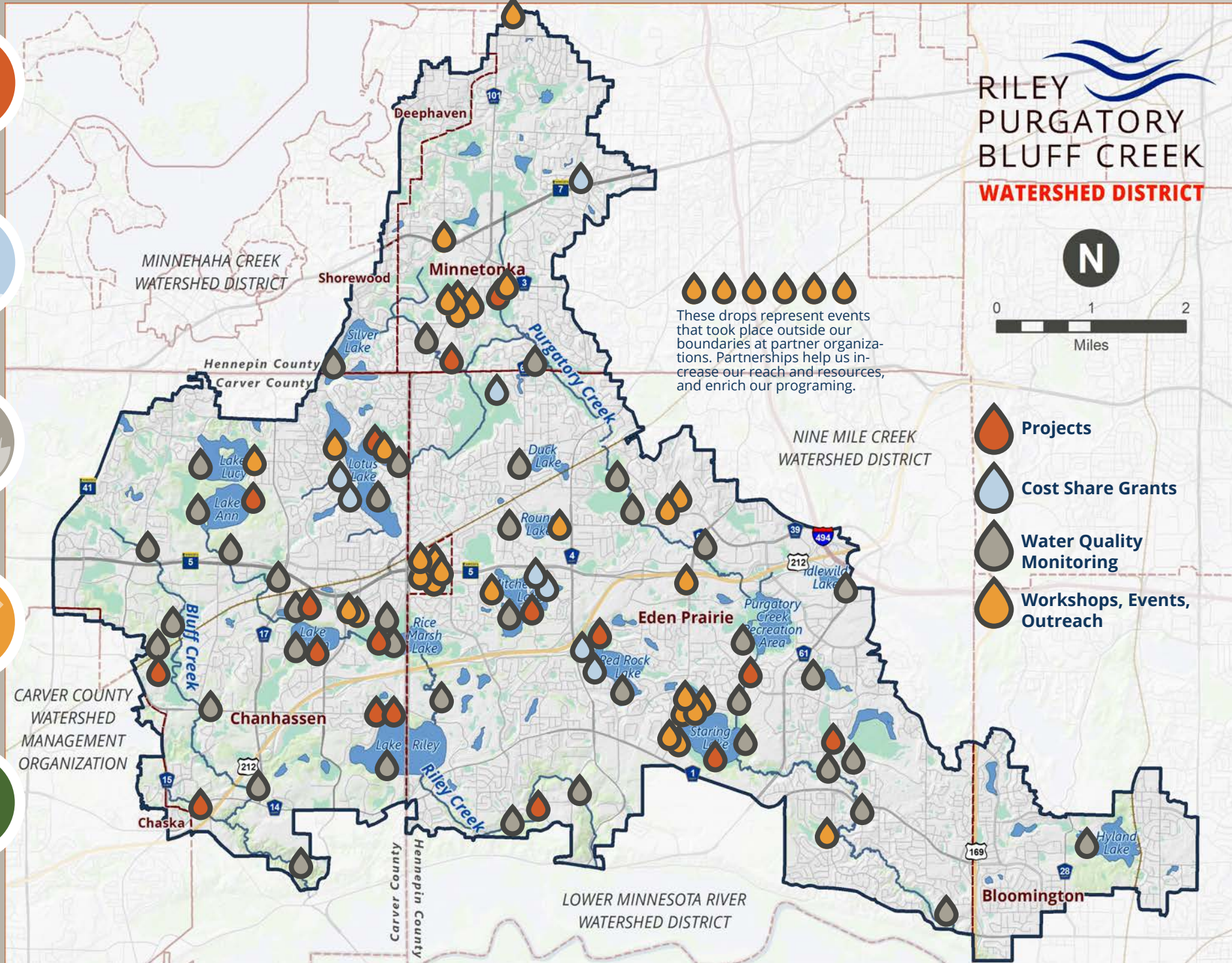
Monitoring sites

38

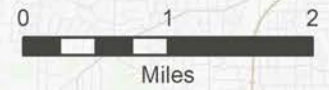
Workshops, events

\$50

Thousand \$ in grants received



RILEY PURGATORY BLUFF CREEK WATERSHED DISTRICT



These drops represent events that took place outside our boundaries at partner organizations. Partnerships help us increase our reach and resources, and enrich our programming.

-  Projects
-  Cost Share Grants
-  Water Quality Monitoring
-  Workshops, Events, Outreach